



SOUTH BROWARD DRAINAGE DISTRICT

South Broward Drainage District Professional Architectural Services

Submitted by:

MCHARRYASSOCIATES



AAC000986 EB0003663

2780 S.W. Douglas Road Suite 302
Miami, Florida 33133
Tel: 305-445-3765



MCHARRYASSOCIATES

ARCHITECTURE. ENGINEERING. PLANNING.

AAC000986 EB0003663 James W. Piersol, AIA Thomas M. Carlson, AIA
2780 SW Douglas Road, Suite 302 Miami, Florida 33133 ph305.445.3765 fax 305.446.9805



Table of Contents

Content	Page Numbers
Table of Contents	2
Letter of Interest	3
Firm Information	4
Certificate of Authorization	5
Size and Organizational Structure of the Firm	6
Statement of No Conflicts of Interest	7
Sub consultants team	7
Prior Experience with SBDD / Understanding of SBDD criteria	7
Prior Experience working with governmental agencies	8
Comparable Projects	9-14
Knowledge and understanding of proposed project	15-24
- Brief description of Project approach	
- Resumes	
- Ability to meet the schedule	
- Certified Minority Business	
Firm History	25-30
- Business ethics	
- Legal Statement	
- Anti-Kickback Affidavit	
- Non-Collusion Affidavit	
- Drug-Free Workplace Affidavit	
- Firm's Insurance Certificate	

October 10th, 2016

6591 Southwest 160 Avenue
Southwest Ranches, FL 33331

RE: South Broward Drainage District - Professional Architectural Services

Esteemed Selection Committee:

MC Harry Associates is extremely pleased to respond to your solicitation regarding the Garage Building Expansion project. We are a Miami based, locally owned and operated design firm celebrating 59 years of superior architectural and engineering service to clients throughout South Florida. MC Harry Associates' design team specializes in serving the public sector clients, who have limited budgets and limited time; but still need superior service..

Design Expertise:

M.C. Harry Associates recognizes the high expectations and challenges presented with this type of project. We have with small additions to public use buildings. Lessons learned through this body of work translate directly into added value to the District.

Our Design Team presents the best blend of professional expertise, creativity and attention to detail required for this type of project.

- We specialize in providing professional services to governmental and institutional clientele;
- Our team members have collaborated for many years on numerous projects;
- You will work directly with the owners and principals of our firm, and those of our engineering sub-consultants.

Project Understanding

We understand that the scope of this project will involve an addition to the existing maintenance and storage garage of about 2,600 SF, plus a covered parking area of about 1,000 SF.

You have provided a conceptual design which appears well thought out and we will be able to implement. Features will include a design to meet a 180 mph wind load, all 4 large garage doors and other openings will be designed to be hurricane resistant. There will be an overhead lifting system with a 2,000# capacity.

The project will include some revisions to the asphalted area, to provide revised parking, together with some tree relocations.

Our team will provide architectural, mechanical/electrical/plumbing engineering and structural engineering. We understand that the District will provide the Civil engineering, and we will coordinate with you for this effort in the same manner as we would for any project.

We look forward to your favorable consideration of our credentials.

Sincerely,
M.C. Harry & Associates, Inc.



**James Piersol, AIA, LEED AP
Principal**

M.C. Harry Associates is immediately available to provide Architectural consulting services as the a consultant for the **South Broward Drainage District**.

Credentials:

M.C. Harry Associates is a State of Florida Corporation, organized on March 24, 1983. The firm's corporate number is G30512. Our corporate licenses and charter are included herein. The firm's office is located at: 2780 S.W. Douglas Road, Suite 302, Miami, Florida 33133.

Number of Years in Business: 59 Years

MC Harry Associates, as your Prime A/E consultant, is locally owned and operated. This means that the primary decision makers on our team live and work here in South Florida; we will remain a valuable local resource and source of support for years to come.

Our 27 person firm will dedicate our municipal facilities design studio to your project. We will assign experienced senior management, CSI-certified construction specifiers and construction document technicians, project architects and experienced designers to develop your project quickly and efficiently. MC Harry Associates will assume the lead responsibility for overall project management and interdisciplinary coordination.

The Team

James W. Piersol, AIA, CSI, LEED AP will be the project director and team executive.

Javier Torres, AIA, LEED AP BD+C will be the project architect and project manager. He will lead the project design, and production efforts from design thru construction.

Lawrence Arrington, AIA, CSI, NCARB, LEED AP will provide code review, quality control and technical specifications.

We have a proven track record serving numerous municipalities, government agencies, universities, colleges and private academic institutions; providing each with outstanding facilities designed to meet defined needs within the approved budget.

State of Florida Department of State

I certify from the records of this office that M.C. HARRY AND ASSOCIATES, INC. is a corporation organized under the laws of the State of Florida, filed on March 24, 1983.

The document number of this corporation is G30512.

I further certify that said corporation has paid all fees due this office through December 31, 2016, that its most recent annual report/uniform business report was filed on January 6, 2016, and that its status is active.

I further certify that said corporation has not filed Articles of Dissolution.

*Given under my hand and the
Great Seal of the State of Florida
at Tallahassee, the Capital, this
the Sixth day of January, 2016*



Ken Detjen
Secretary of State

Tracking Number: CC6739941273

To authenticate this certificate, visit the following site, enter this number, and then follow the instructions displayed.

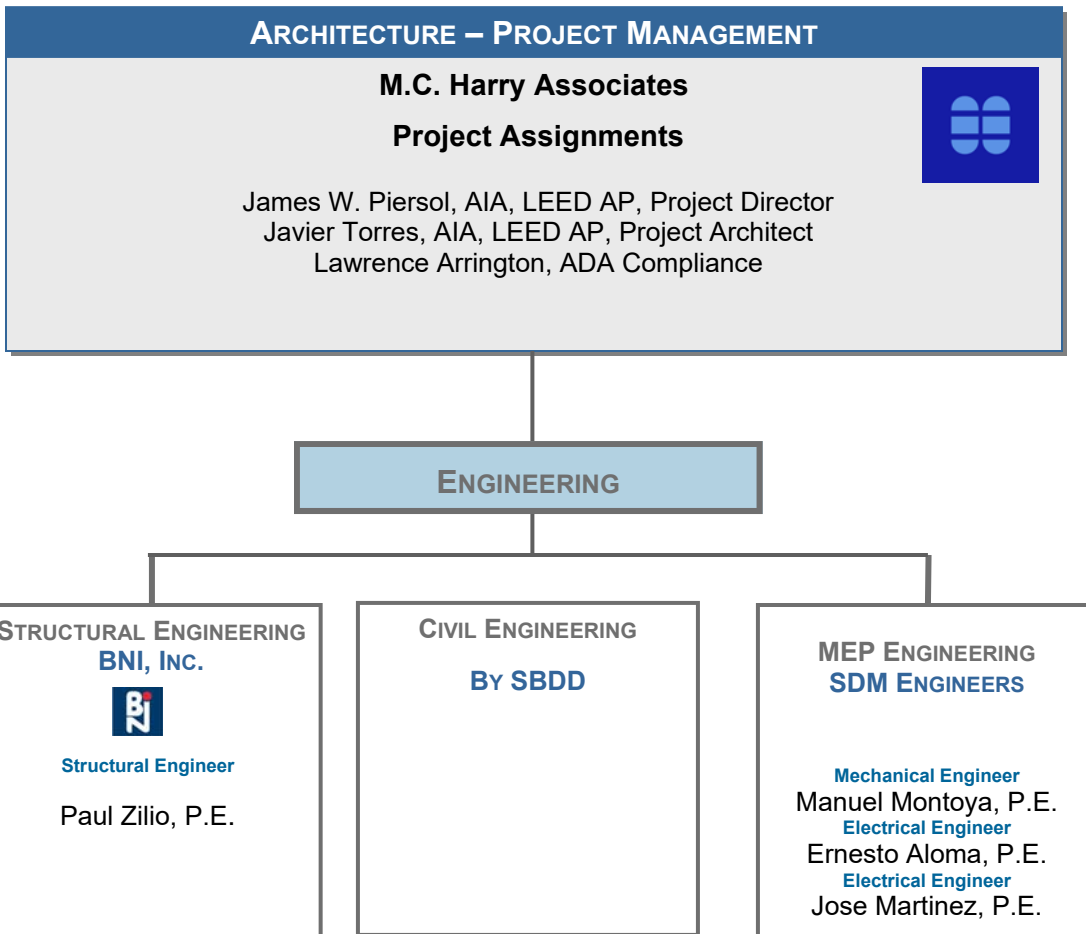
<https://services.sunbiz.org/Filings/CertificateOfStatus/CertificateAuthentication>

**SOUTH BROWARD DRAINAGE DISTRICT
ARCHITECTURAL SERVICES**

M.C. HARRY DESIGN TEAM

M.C. Harry and Associates is a 27 person Architectural Firm. We were organized as a "C-Corporation" in 1983 and have five (5) principals/ owners. We are a certified Minority Owned business by the School Board of Broward County, Broward College, and Miami Dade County.

For this project we would propose the following organizational structure.



Statement of No Conflicts

M.C. Harry Associates has no conflict of interest in pursuing the South Broward Drainage District Garage Building Expansion.

Sub Consultants Team

M.C. Harry and Associates typically sub-contracts our engineering services to these two engineering firms. We have been collaborating together for over 20 years.

STRUCTURAL: Bliss and Nyitray has been collaborating with MC Harry since 1982. They are the best structural engineers in South Florida. Mr. Paul Zilio, PE, offers a wealth of experience in the design of large scale public facilities. Their work on large scale, public structures also gives them the experience to design ‘hardened’ buildings when extra ordinary security measures are needed.

MEP: SDM has been collaborating with MC Harry for over 30 years; providing complete MEP design on all of our major projects including the many expansion projects at the Dade County Courthouse. SDM engineers understand the need for quite and efficient HVAC systems, clear and efficient and secure electrical and communication system distributions in public facilities

Bliss & Nyitray, Inc.	Structural Engineering	800 Douglas Entrance, Suite 300 Coral Gables, Florida, 33134
SDM Consulting Engineers, Inc.	Mechanical and Electrical Plumbing, HVAC, Engineering	135 Almeria Avenue Coral Gables, Florida, 33134

Prior Experience with SBDD

M.C. Harry and Associates has not had the honor off serving the South Broward Drainage District, so we do not have any past experience directly with the South Broward Drainage District.

However, we have dedicated our careers to serving public agencies throughout South Florida. Each public entity that we serve each have their specific design criteria. It is our normal process to quickly review, familiarize ourselves and confirm that all of our work will meet your specific criteria.

M.C. Harry and Associates exclusively serves public (government) agencies throughout South Florida. Each public entity that we serve each have their specific design criteria. It is our normal process to quickly review, familiarize ourselves and confirm that all of our work will meet your specific criteria.

We have served the following public agencies, all of whom have specific design criteria that must be followed..

Broward County Aviation

Broward County Schools

Broward County Convention Center

City of Miramar

Town of Miami Lakes

City of Miami

Miami Dade County Public Schools

Miami Dade County ISD

Miami International Airport

Broward College

Miami Dade College

Florida International University

Barry University

City of West Park

Village of Palmetto Bay

City of Coral Gables.

M.C. Harry and Associates offers the following projects that would have comparable project issues.

Miami Airport - Automated Peoplemover Replacement

Project involved renovations and additions to the fixed facilities components to support this transportation system. Elements included maintenance bay (garage); and additions to the existing terminal to accommodate maintenance elements.

Boulevard Heights Elementary Addition - Broward County

Project involved adding a building to an existing campus. Challenge

Lake Forest Elementary School Addition - Broward County

Project involved a phased replacement of several buildings on an existing school campus. All functions on campus had to remain fully functional during construction.

Miami Airport - Parking Garage Infill

Project involved design for utility infill decks to increase parking capacity between two existing parking garages at Miami International Airport. MDAD Maintenance offices were located a the ground floor areas.

Airport Fire Rescue Facility (ARFF) - at Fort Lauderdale Airport.

Project involved design for a mid field fire station. The fire station include vehicle maintenance bays. This was a 26,000 sf / two story building located between two active airport taxi-ways. The aircraft rescue and firefighting component includes an administration wing, a five bay apparatus area including a vehicle maintenance bay, and a day room, dining room, kitchen, toilet/shower/locker rooms, and a dormitory that sleeps sixteen fire fighters.

MIA CCE AUTOMATED PEOPLE MOVER

Client:

Miami International Airport

Type of Project:

Automated People Mover System

Project Location:

Miami International Airport

Construction Cost:

\$40 million

**Fixed Facilities
Square Footage:**

75,000sf

Completion Date:

Phase 1 - July 2016

Client Reference:

Carlos E. Jose
305-876-8398



Miami International Airport (MIA) is the largest U.S. gateway for Latin America and the Caribbean and is one of the busiest international passenger and freight airports in the world. With the completion of the North and South Terminal expansion programs, the airport is now implementing a modernization program for their Central Terminal, including a new automated people mover light rail system.

MC Harry Associates, as part of a Central Terminal APM Design Build Team, has been contracted to head the architectural and engineering fixed facilities design team and coordinate with the APM Technology provided by Leitner-Poma of France. The APM System improves international passenger arrival and departure movement to and from the Concourse E Satellite Terminal.



The APM operating system is a cable drawn technology moving dual shuttle trains along a quarter mile elevated guideway structure. Each train is comprised of three cars which are serviced from a level 2 maintenance bay located in the Satellite directly below the level 3 station platform.

BOULEVARD HEIGHTS ELEMENTARY SCHOOL**Client:**

School Board of
Broward County

Type of Project:

New Multipurpose /
Dining Building,
Renovations, ADA
Compliance Updates,
New Parent Drop-off

Project Location:

Ft. Lauderdale, Florida

Building Area (sf):

20,000sf Multipurpose /
Dining Building

Student Capacity:

400 Students at
Multipurpose Building

Budget:

\$10 million

Year of Construction:

Sept. 2008

Construction Method:

CM at Risk

Building Material:

Masonry + Stucco,
Architectural CMU

Client Reference:

Sonja Cooley
754-321-1520



The project scope includes a 20,000 sf multi-purpose venue for student dining and staged productions.

This new 'cafetorium' with its related covered walkway system expands the overall campus complex creating spaces for pre-school gathering and open air study.

Other project elements include a new parent drop-off area and driveway; expanded surface parking area; and ADA compliance upgrades.

LAKE FOREST ELEMENTARY

Client:

School Board of
Broward County

Type of Project:

New Multipurpose /
Dining Building,
Classroom Prototype
Building Replacement

Project Location:

Pembroke Park, Florida

Building Area (sf):

14,000sf Multipurpose /
Dining

Student Stations:

Over 850 Students

Construction Cost:

\$8.6 million

Year of Construction:

Estimated Completion
2008

Construction Method:

Hard Bid

Building Material:

Masonry + Stucco,
Architectural CMU

Client Reference:

Sonja Cooley
754-321-1520



At Lake Forest Elementary School, MCHarry Associates designed the 44,000sf replacement of six (6) classroom buildings (28 classrooms total) and the addition of a cafeteria/ multi-purpose building.

The classroom building was designed as a prototype / expandable classroom addition. This site constructed 3 modules. These modules were subsequently used at other schools in Broward County.

The 13,000sf dining / multipurpose space includes a stage, dining area, dressing rooms and full kitchen. Also included in the scope of work are improvements to the parking lot, parent drop-off and bus drop-off areas. In addition, life safety upgrades were made to the entire school and a mechanical life cost analysis was completed.

PARKING GARAGES NO. 3 & NO. 5 INFILL

Client:

Miami-Dade Aviation
Department

Type of Project:

Parking Garage

Project Location:

Miami International
Airport

Construction Cost:

\$6 million



A seven story' vehicular parking structure infill between two active public parking garages at Miami International Airport. The 65' x 400' concrete structure introduces 400 additional parking spaces to the MIA revenue parking environment.

AIRPORT RESCUE AND FIRE FIGHTING FACILITY

Client:

Broward County
Aviation Department

Type of Project:

Ft. Lauderdale/
Hollywood International
Airport
Emergency Operations
Center and Airport
Rescue and Fire
Fighting Facility

Project Location:

Fort Lauderdale, Florida

Building Area (sf):

26,000sf

Construction Cost:

\$5.6 million

Year of Construction:

2003

Construction Method:

Hard Bid

Building Material:

Masonry & Stucco

Awards:

**Unbuilt Public Works
Project Award** by the
Broward Chapter of the
American Institute of
Architects

Client Reference:

Trevor Fisher
954-359-2292



MCHarry Associates has designed a new mid-field fire station for Fort Lauderdale/Hollywood International Airport's Airport Rescue & Fire Fighting Facility (ARFF).

This multi-function complex includes the airport central emergency operations and main communications center together with a mid-field fire station. This is a 26,000sf, two story building located between two active airport taxi-ways.

The aircraft rescue and firefighting component includes an administration wing, a five bay apparatus area including a vehicle maintenance bay, and a day room, dining room, kitchen, toilet/shower/locker rooms, and a dormitory which sleeps sixteen fire fighters.

The central communications and emergency command center component is located on the second level. The EOC command room serves the airport's central location for coordinating all efforts in an emergency event. The central communications facility serves the airport security and fire alarm system.



Project Approach

Project Approach

This is a relatively small, but important project. The conceptual design has been completed, therefore, we would anticipate an expedited development of the design and plans.

Program Validation: We will host, and arrange a meeting, workshop with you and all stake holders for the project. During this workshop we will review the plans prepared to date by the District and confirm the program requirements.

Site Validation: We will visit the site, to review the existing conditions against the project requirements. We will take all required measurements of the existing building and review the existing MEP infrastructure available.

Construction / Permit Documents: Develop full construction documents; drawings and specifications, setting forth in detail the requirements of the Project, Bidding and Contracting for the construction of the project. We will prepare construction documents for the project including the MEP and structural engineering documents. We will coordinate with the Civil Engineering documents that will be prepared by the District. The Construction Documents will include plans and technical specifications. Construction Documents shall provide for each discipline detailed floor and roof plans, interior and exterior elevations, building and wall sections inclusive of related details at large scale, door, window, finish and equipment schedules, hardscape and technical specifications in CSI 16 Division format suitable for bidding, building permitting and construction

Permitting: We will assist the District in obtaining permit approvals from the Authorities having Jurisdiction.

Bidding: We will assist the District in obtaining competitive bids from contractors for this work. We will provide responses to any RFI's that are presented and issue addenda as required.

Construction Phase: During this phase we will provide administration of the Construction Contract. We will attend regularly scheduled site meetings to observe the construction work for conformance with drawings and specifications as well as adherence to the Construction Schedule. We will review and respond to RFI's, review shop drawings, review change orders submitted by the contractor and issue recommendations, review and recommend action regarding contractor's monthly payment requisition.

Resumes:

James Piersol - Architect - Project Director

Javier Torres - Architect - Project Architect / Manager

Lawrence Arrington - Architect - Code Compliance and Quality Control

Manuel Montoya, P.E. - Electrical Engineer

Jose Martinez, P.E. - Mechanical Engineer

Paul Zilio, PE, P.E. - Structural Engineer

Resumes**MCHARRYASSOCIATES**

JAMES W. PIERSOL, AIA, LEED® AP, CCS, Principal
Principal



Project Assignment: Project Director - Principal-In-Charge

Education: University of Florida Master of Arts in Architecture

Professional Registration: Florida Architect #8079 / Certified Construction Specifier
LEED® Accredited Professional

Professional Affiliations: American Institute of Architects, Construction Specifications Institute,
National Trust for Historic Preservation, US Green Building Council

Mr. Piersol has over 40 years of experience in the planning, design and construction of major public buildings including municipal facilities such as fire stations, village halls, libraries, and schools; aviation and transportation related facilities; banks; restaurants; vintage building renovations; and historic restorations.

Mr. Piersol has also been responsible for numerous studies, consultation reports, construction cost estimates and specifications. Awards include a Citation Award for Technical Excellence in the production of Contract Documents from the C.S.I.; the F.A.A.I.A. Bronze Medal; and the AIA Miami Historic Preservation Award.

Clients Served

- Broward County Aviation
- Broward County Schools
- Broward County Convention Center
- City of Miramar
- Town of Miami Lakes
- City of Miami
- Miami Dade County Public Schools
- Miami Dade County ISD
- Miami International Airport
- Broward College
- Miami Dade College
- Florida International University
- Barry University
- City of West Park
- Village of Palmetto Bay
- City of Coral Gables

Resumes**MCHARRYASSOCIATES****Javier Torres, AIA, LEED® AP BD+C, CDT, Principal***Principal***Project Assignment:** Project Architect**Education:** 1998, Master of Architecture, Florida A& M University,
1994, Bachelor of Science, Florida A&M University**Professional Registration:** Florida Architect #94538 / NCARB Certified
Certified Construction Documents Technician / LEED® BD+C Accredited Professional**Professional Affiliations:** American Institute of Architects
US Green Building Council

Mr. Torres' experience with municipal clients make him the perfect fit for this project. Mr. Torres has recent experience with LEED® certified projects with local cities and understands the intricacies of the process. He is a proactive project manager that has attention to detail and is aware of the clients needs, requirements and limitations. His projects are within budget and on schedule.

Relevant Experience**Vizcaya Park Community Center, City of Miramar**

Project Architect for the 7,660 GSF single story 'green' Community Center building serves as the anchor and support facility for the 20 acre park development. This project is on track to receive LEED® Gold certification in Fall of 2012.

Royal Oaks Park Community Center, Town of Miami Lakes

Project Manager for Town of Miami Lakes, a LEED® Gold Certified 9,000sf facility comprised of a main entry lobby / circulation core; a reception / office space; a multipurpose room with operable partitions dividing the space into four separate venues; and a warming kitchen.

Police Substation and Mounted Police Stable Facility at Lummus Park, City of Miami

Project Manager responsible for the design and construction administration of a 5,000sf police substation for the City of Miami mounted police unit. Project is nestled within historic Lummus Park in downtown Miami which required extensive collaboration with the Historic Preservation Board.

Community Outreach Center, City of Dania Beach Project Manager for Schematic Design of a facility housing senior citizen activities and day care programs in collaboration with a local hospital, church, police department and the Meals on Wheels agency. The building design includes a community hall, arts and crafts studio, computer classroom, counseling offices and a kitchen.

Country Club Park of Miami Clubhouse & Pool Facility, Dade County Parks

Project Architect for a municipal community center with two separate buildings totaling 10,400sf. The Scope elements include lobby/reception space; multipurpose / dining room; outdoor dining patio; warming kitchen for catered events; exercise room, meeting room, media/activity room, public swimming pool and related toilet / shower with locker rooms with a security office.

Gibson-Bethel Community Center, City of South Miami

Project Architecture for a 23,000 sf facility with a gymnasium, classrooms, arts and crafts workshops, administrative offices, and a multipurpose room.

Mary L. Rice Service Center, Florida Keys Aqueduct Authority Project Manager for 10,000sf customer service and sustainable design demonstration center located in Marathon in the Florida Keys seeking Platinum Level LEED Certification.

Dinner Key Marina Dockmaster Facility City of Miami

Project Manager for design and construction of a new building to replace the existing Dock Master's building, located in Dinner Key Marina. It is planned as a three-story building to be erected on structural pilings. The ground floor will accommodate support facilities, with customers' area and administrative spaces on the second and third floors, respectively. The first floor will consist of a lim-

Resumes**MCHARRYASSOCIATES****LAWRENCE ARRINGTON AIA, CSI, NCARB, LEED® AP
Principal**

Project Assignment: Specifications Writer / Code Compliance

Education: Master of Arts in Architecture - University of Florida - 1978
Construction Management, Florida International University /

Professional Registration: Florida Registered Architect #8516 / NCARB Certified #25916
LEED® AP BD+C

Professional Affiliations: American Institute of Architects, Construction Specifications Institute,
US Green Building Council



Mr. Arrington has more than 35 years of professional experience in architecture, landscape design, and facilities planning. His special expertise in program and code analysis, combined with his design talents and detailed knowledge of construction make him a most effective quality control manager with an established track record for delivering award winning projects on-time and within budget. Mr. Arrington performs code compliance reviews on ALL MC Harry Associates projects.

With a direct and unique working knowledge of the various building codes that govern building construction in South Florida, Mr. Arrington's expertise is an invaluable asset to our team. His knowledge allows us to evaluate code issues early in the design process to assure the project program and conceptual design can meet the many stringent and sometimes conflicting codes and authorities.

Well-written documents are the best insurance for any construction project, making the role of the design team's construction specifier critical to a successful project. Mr. Arrington has decades of experience in specifications writing and editing, master specifications development, project manual preparation, construction contract administration, and quality control review. Mr. Arrington's experience also includes considerable knowledge of construction materials, systems, and methods; excellent verbal and written communication skills; understanding of construction graphic information; ability to negotiate, coordinate, and arbitrate; management techniques to meet schedules; good research methods; good understand construction law, codes and ordinances, insurance and bonds, and quality assurance and quality control.

Resumes**SDM Consulting Engineers, Inc.****MANUEL MONTOYA, P.E.**

President



Project Assignment: Mechanical / Electrical Project Manager

Education: B.S. Electrical Engineering, 1989 Florida International University
Associate in Arts Degree in Electrical Engineering, 1983
Miami-Dade College

Professional Registration: Florida Engineer #66220

Professional Affiliations: IAEE – International Association of Electrical Inspectors
NECA – National Electrical Contractor’s Association

Experience:

Mr. Montoya is in charge of the Firm’s Electrical Department. In this position, he is responsible for all phases of electrical design and specification, including power distribution, telecommunications distribution, lighting design, fire alarm systems, security alarm systems, sound systems, lightning protection systems and emergency standby systems.

Relevant Experience**City of Coral Gables, Miracle Theater Restoration**

MEP Engineering for the various facility improvements including the restoration of the marquee sign, the re-roofing of the theater and the stucco repairs including crack repair

Miami Dade County Courthouse – ADA Barrier Removal / FAFS Renovation

The scope of this project consisted of the upgrade of toilet facilities and drinking fountains for the ADA Barrier Removal portion of the project; and the extension of the automatic fire sprinkler system and updating of the fire alarm system for FAFS Renovation portion of the project for the 26-Story Historical Building. The cost of this project was \$3.7 million.

Miami Dade County - General Services Administration, Courthouse Restorations

MEP Engineering The projects involve engineering tasks included various investigation studies (exterior restoration, upgrading the various building utilities such as telephone, air conditioning systems, elevator systems), complete space planning and reprogramming.

South County Courthouse Expansion Phases 2 & 4 Addition / Renovations and Parking Garage Phase 1

MEP Engineering for the construction of a new 75,000sf addition and renovation of 68,000sf of the existing Courthouse facility. A 3 story parking structure with 369 parking spaces and 161 surface parking spaces along the east side of the property to service the courthouse expansion and proposed library.

City of Miami / CRA, Fire Station No. 2 Restoration and Renovation

MEP Engineering for the restoration and renovation of the historic Fire Station No. 2, the scope includes selective demolition, repairs to structural elements, roofing system and new service lines.

Lauderhill Municipal Complex (Public Library and Police Facility) Lauderhill, Florida

MEP Engineering for a 25,000sf public safety (Public library - 10,000sf / Police Station - 15,000sf) constructed on a 22 acre site under a design-build process for a 24/7 operation facility. Project Budget: \$3.2 million

Miami City Hall, Miami, FL

Project Engineer for Structural Condition Assessment and Repairs on a designated historical landmark built in 1933.

Resumes**SDM Consulting Engineers, Inc.****JOSE MARTINEZ, P.E., LEED AP**

Principal

**Project Assignment:** Mechanical Engineering Project Manager**Education:** B.S. Mechanical Engineering, 1994
Florida International University**Professional Registration:** Florida Engineer #53779, LEED Accredited Professional**Professional Affiliations:** ASME – American Society of Mechanical Engineers
ASHRAE – American Society of Heating, Refrigerating and Air Conditioning Engineers**Experience:**

Mr. Martinez is a Mechanical Engineer having participated in a variety of the Firm's institutional projects. His expertise spans the areas of HVAC, Plumbing and Fire Protection.

Relevant Experience**Royal Oaks Park Community Center (LEED)**

A single story community center building of approximately 8,200 gsf designed to meet the character of the community and the functional needs of the Town of Miami Lakes. The estimated budget cost for this project is \$1.7 million.

Vizcaya Park Community Center Building

The community center shall be a single-story building of approximately 7,660 gsf, and will include spaces for recreation, computer education/activity, gaming, park concessions, one office, and support functions with the expectation of achieving a LEED Silver Rating from the USGBC. The project is located within Vizcaya Park and will serve as the anchor and support facility for the 20 acre park environment. The estimated construction cost of this project is \$2 Million

Miami-Dade New Children's Courthouse (LEED) – Miami, FL

M/E/P Engineering Services of this Silver Rated LEED Design project. This courthouse will be a 14-story, 375,000 sf building consisting of courtrooms, judge's chambers, a sally port, cafeteria, a green roof patio, and general administration spaces. The estimated cost of this project is: \$134 Million.

Miami Dade County Courthouse – ADA Barrier Removal / FAFS Renovation

The scope of this project consisted of the upgrade of toilet facilities and drinking fountains for the ADA Barrier Removal portion of the project; and the extension of the automatic fire sprinkler system and updating of the fire alarm system for FAFS Renovation portion of the project for the 26-Story Historical Building. The cost of this project was \$3.7 million.

South County Courthouse Expansion and Parking Garage – Delray Beach, FL

M/E/P/FP design and construction management of this 75,000 sf courthouse addition, the construction of a new 3-story parking garage, and the renovations and modifications of the existing courthouse site and parking lot.

East Homestead Fire Rescue Station No. 65 (D/B)

A fire rescue facility of approximately 7,000 square feet (6,638 sf building + 410 sf covered patio & covered entry) completed within a design-build process for the purpose of servicing and responding to community emergencies.

GSA West Lot Facility – Parking Garage and Office (LEED)

Approx. 1.73 acres - Facility comprised of approx. 324,000 sf of parking area in 810 parking spaces on multiple floors, and 45,000 sf of office space on three floors, plus retail space on the ground floor for a minimum of 10,000 sf or as required by Code. This facility is required to attain a LEED Silver Certification. The estimated construction cost of this project is \$13.4 million.

GSA Trade Shop Facility (LEED)

This 100,000 sf facility designed for the Miami-Dade County General Services Administration will serve as a base for construction managers record management and trade shops personnel. The cost of this project is \$11 million.

Resumes

Bliss & Nyitray, Inc.
PAUL ZILIO, P.E.
 Senior Principal / Partner



Project Assignment: Structural Project Manager

Education: 1981, B.S. Civil Engineering, University of Michigan

Professional Registration: Licensed Professional Engineer, Florida
 Certified Special (Threshold) Inspector

Experience:

Paul worked in a variety of roles for a major general contractor and became a Certified General Contractor prior to joining Bliss & Nyitray. Since then, Paul has worked on a number of design-build projects and often served as Threshold Inspector. These experiences have given Paul a unique insight into partnering and the value of good and timely communication and have helped lead BNI to receiving recommendations by a number of contractors.

Paul has designed a variety of structural systems, including cast-in-place concrete, composite precast concrete, tilt-up concrete, and structural steel. He works closely with designers and builders, regardless of delivery method, to make structural decisions that balance aesthetics, constructability, cost and schedule.

Relevant Experience**Miami City Hall Structural Condition Assessment**

Principal in charge for Structural condition assessment, report, repair recommendations and repairs to this designated historical landmark, 3 story building built in 1933.

City of Miami Fire Station No. 2

Principal in Charge for Structural Engineering for the 1920's designated historical landmark restoration. Scope includes structural condition assessment and restoration and remodeling.

Alliance Francaise de Miami

Principal-In-Charge for 20,000sf renovation of a dilapidated industrial building into an elegant facility housing offices, a library, meeting space and café. The design included work required to restore the structural integrity of the building, a new roof structure and a 4,000sf signature entrance. Construction Cost: \$3.1 Million

Florida International University, Renovations, Additions, Rehabilitations, Restorations

Structural Engineering for miscellaneous services with FIU. Tasks have included load studies, structural assessments, waterproofing and additions.

Miami-Dade County GSA Trade Shop, Miami, Florida (Design-Build)

Principal-in-charge for a 100,000-gsf, two-story trade warehouse (80,000-sf) office/storage space (20,000-sf), and parking for 214-cars. Pursuing LEED Silver certification

Broward County Judicial Complex, Fort Lauderdale, Florida

Project Engineer, Construction Administration for a Two Six-Story Office and Courtroom Wings, Three Pedestrian Bridges spanning 125-ft to 189-ft

North County Government Center, West Palm Beach, Florida (Design-Build)

Project Manager, Project Engineer for a 2-story office building

City of Hialeah Courthouse, Hialeah, Florida

Principal-in-charge, Project Engineer for a 2-story courthouse

Ability to Meet Schedule

The MC Harry Associates Team understands the schedule and budget constraints typically imposed on municipal projects and have developed effective tools to accomplish high quality affordable architecture through collaboration with both the owner and the facility user groups.

MC Harry Associates' excellent record of cost control, program responsiveness and timeliness of service evidenced by the accuracy of our cost estimates vs. actual project bid track record. The trust and endorsement of our work by governmental and private sector clients is documented in recommendations and attested to by our time honored working relationships.

The Project Managers are responsible for establishing a finite, detailed schedule and conceptual cost estimate (detailed by trade) starting at A/E contract negotiations and refined under time through subsequent project phases. Our team strives to provide a smooth design process that is parallel with our recent experience designing for public use facilities in South Florida.

Schedule Control: A specific project schedule is developed and maintained on each project. This schedule shows the duration of each task required including Owner review times. The working times / review times / bidding periods / construction periods are all clearly defined.

The project schedule is updated with any changes and annotated each month so that the entire project team stays on track.

During the developmental stages of the project, MC Harry Associates routinely coordinates design concepts with the local permitting agencies with intent to solicit their input and to avoid unexpected requests for change during the formal permitting process, which could impact budget and/or schedule.

M.C. Harry & Associates is a minority owned Architecture firm. The firm is also certified as an SBE with Miami Dade County. Our team includes SDM, a minority owned MEP firm.



Internal Services Department
Small Business Development
111 NW 1 Street, 19th Floor
Miami, Florida 33128
T 305-375-3111 F 305-375-3160

September 19, 2016

CERT NO: 16354

Dr. Craig Aquart
M.C. HARRY AND ASSOCIATES, INC.
2780 SW Douglas Rd Suite 302
Miami, FL 33133

Approval Date: 9/15/2016 - ACDBE

Approval Date: 9/15/2016 - DBE

Anniversary Date: Annually on September 15

Dear Dr. Aquart:

Miami-Dade County Small Business Development (SBD), a division of the Internal Services Department (ISD), is pleased to notify you that your firm is certified under the Florida Unified Certification Program (UCP). Your firm meets the eligibility requirements for certification as a Disadvantaged Business Enterprise (DBE) and an Airport Concession Disadvantaged Business Enterprise (ACDBE) in accordance with 49 CFR Part 23 and 26.

DBE and ACDBE certifications are continuous with no expiration date; however, firms are required to attest that there are no changes via the No Change Declaration form annually on the firm's anniversary date to remain certified. You will be notified of your annual responsibilities in advance of the Anniversary Date listed above. You must submit the annual **No Change Declaration** form no later than the Anniversary Date to maintain your eligibility. Your firm will be listed in the UCP DBE Directory which can be accessed through the Florida Department of Transportation's website: <http://www3b.dot.state.fl.us/EqualOpportunityOfficeBusinessDirectory/>

DBE and ACDBE certifications are NOT a guarantee of work, but it enables the firm to compete for and perform contract work on all USDOT Federal Aid (FAA, FTA and FHWA) projects in Florida as a DBE and ACDBE contractor, sub-contractor, consultant, sub-consultant or material supplier.

If at any time there is a material change in your firm, you must advise this office by sworn affidavit and supporting documentation within thirty (30) days. Changes include, but are not limited to ownership, officers, directors, management, key personnel, scope of work performed, daily operations, on-going business relationships with other firms, individuals or the physical location of your firm. After our review, you will receive instructions as to how you should proceed, if necessary. Failure to comply will result in action to remove your firm's DBE and ACDBE certifications.

Questions or concerns should be directed to this office by mail or telephone. Our telephone number is (305) 375-3111 and fax number is (305) 375-3160.

Sincerely,



Claudious Thompson, Section Chief
Small Business Development Division

NAICS & Industry Title: (Your firm is eligible to compete for and perform work on all USDOT Federal Aid projects throughout Florida and may earn DBE or ACDBE credit for work performed in the following areas.)

- 541310 - ARCHITECTURAL SERVICES (ACDBE)
- 541310 - ARCHITECTURAL SERVICES (DBE)
- 541410 - INTERIOR DESIGN SERVICES (ACDBE)
- 541410 - INTERIOR DESIGN SERVICES (DBE)

M.C. Harry & Associates is a minority owned Architecture firm. The firm is also certified as an SBE with Miami Dade County. Our team includes SDM, a minority owned MEP firm.



Business Ethics

M.C. Harry & Associates has been in continuous operations for 59 years. The firm is one of the oldest established Architecture firms in South Florida.

We have a proven track record serving numerous municipalities, government agencies, universities, colleges and private academic institutions; providing each with outstanding facilities designed to meet defined needs within the approved budget.

Legal Statement

List any prior business ethics or professional ethics disciplinary actions in the past 10 years:

NONE

Has your firm resigned or been removed from a project in the past 5 years?

NO

List any lawsuits filed against the firm in the past 5 years?

NONE

ANTI-KICKBACK AFFIDAVIT

STATE OF **Florida**)
) SS:
COUNTY OF **Miami-Dade**

I, the undersigned hereby duly sworn, depose and say that no portion of the sum to be paid for providing architectural services will be paid to any employees of the South Broward Drainage District or its elected officials, as a commission, kickback, reward or gift, directly or indirectly by me or any member of my firm or by an officer of the corporation.

By: **James W. Piersol**

Principal

(Title)

Sworn to and subscribed before me this **10th** day of **October**, 20**16**.

STATE OF FLORIDA)
) §
COUNTY (**Miami-Dade**)

The foregoing instrument was acknowledged before me this **10th** day of **October**, 20**16**, by **James Piersol**, as, who is personally known to me or who has produced **N/A** as identification.

Print Name: **Jackie Ibinarriaga**
Notary Public, State of Florida at Large
Commission No. **#FF 107385**

My Commission Expires:
July 28, 2018

NON-COLLUSION AFFIDAVIT

STATE OF FLORIDA)
) §
COUNTY OF BROWARD)

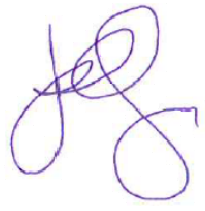
James W. Piersol, being first duly sworn, deposes and says that he or she is the **Principal** of **M.C. Harry & Associates, Inc.**, the party making the foregoing proposal, that the proposal is not made in the interest of, or on behalf of, any undisclosed person, partnership, company, association, organization, or corporation; that the proposal is genuine and not collusive or a sham; that the proposer has not directly or indirectly induced or solicited any other proposer to put in a false or sham proposal, and has not directly or indirectly colluded, conspired, connived, or agreed with any proposer or anyone else to put in a sham proposal, or that anyone shall refrain from submitting a proposal; that the proposer has not in any manner, directly or indirectly, sought by agreement, communication, or conference with anyone to fix the proposal or the negotiated price of the proposer or any other proposer, or to fix any overhead, profit, or cost element of the negotiated price, or that of any other proposer, or to secure any advantage against the public body awarding the contract of anyone interested in the proposed contract; that all statements contained in the proposal are true; and further, that the proposer has not, directly or indirectly, submitted his or her proposal or any portion thereof, or the contents thereof, or divulged information or data relative thereto, or paid, and will not pay, any fee to any corporation, partnership, company association, organization, bid depository, or to any member or agent thereof to effectuate a collusive or sham proposal.

Signed:  _____ Date: **10/10/2016** _____

By: **James W. Piersol** _____

STATE OF FLORIDA)
) §
COUNTY OF **Miami-Dade**)

The foregoing instrument was acknowledged before me this **10th** day of **October**, 20 **16**, by **James Piersol**, as, who is personally known to me or who has produced **N/A** as identification.



Print Name: **Jackie Ibinarriaga**
Notary Public, State of Florida at Large
Commission No: **#FF 107385** _____

My Commission Expires:
July 28, 2018

DRUG FREE WORKPLACE AFFIDAVIT

FLORIDA STATE STATUTE 287.087

Preference shall be given to businesses with drug-free workplace programs. Whenever two or more bids, proposals or replies that are equal with respect to price, quality, and service are received by the State or any political subdivision for the procurement of commodities or contractual service, a bid, proposal or reply that certifies that it or has implemented a drug-free workplace program shall be given preference in the award process. In the event that proposals are received by two or more firms that have a drug-free workplace program or, if none of the firms have a drug-free workplace program, the District will determine who is the most qualified firm based on the qualification criteria provided; or in the alternative, the District reserves the option to solicit new Letters of Interest for this project.

In order to have a drug-free workplace program, a business shall:

1. Publish a statement notifying employees that the unlawful manufacture, distribution, dispensing, possession, or use of a controlled substance is prohibited in the workplace and specifying the actions that will be taken against employees for violations of such prohibition.
2. Inform employees about the dangers of drug abuse in the workplace, the business's policy of maintaining a drug-free workplace, any available drug counseling, rehabilitation, and employee assistance programs, and the penalties that may be imposed upon employees for drug abuse violations.
3. Give each employee engaged in providing the commodities or contractual services that are under bid a copy of the statement specified in subsection (1).
4. In the statement specified in subsection (1), notify the employees that, as a condition of working on the commodities or contractual services that are under bid, the employee will abide by the terms of the statement and will notify the employer of any conviction of, or plea of guilty or nolo contendere to, any violation of chapter 893 or of any controlled substance law of the United States or any state, for a violation occurring in the workplace no later than 5 days after such conviction.
5. Impose a sanction on, or require the satisfactory participation in a drug abuse assistance or rehabilitation program if such is available in the employee's community by, any employee who is so convicted.
6. Make a good faith effort to continue to maintain a drug-free workplace through implementation of this section.

